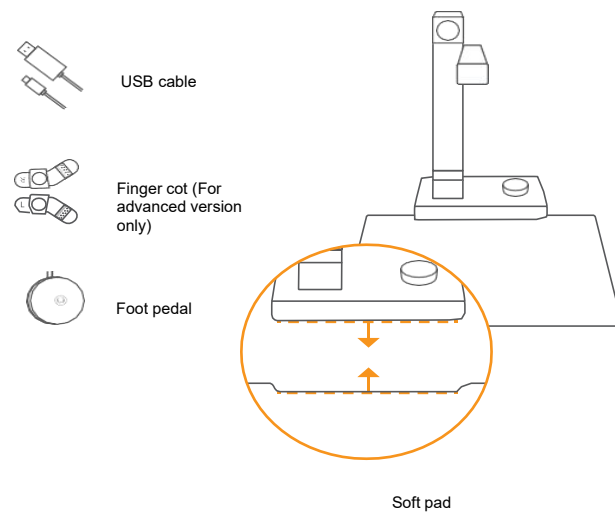


Preparation

1. Take out the device, the black soft pad, and other accessories.
2. Place the device on a flat table, align the notch of the black soft pad with the edge of the device base properly.



FAQ

1. CZUR Shine adopts the USB Video Class (UVC) standard protocol. It is a standard drive-free device. If the device cannot be recognized by a PC, you can try the following methods.
 - 1) Turn off the device, connect the device to the PC, and then turn on the device.
 - 2) Restart the device and disconnect and reconnect the USB cable.
 - 3) Try other USB ports on the PC.
 - 4) Close anti-virus software and active background firewalls.
 - 5) If a yellow exclamation mark/"unknown device" appears in the device manager of the PC, you can click to update the driver or right-click to disable and then right-click to enable the driver, and then restart the device to try again.
 - 6) Restart the PC or try another PC.
2. If you encounter any problem during use, you can read the product manual (printed), or enter the Support section of the official website to get more use instructions.

CZUR TECH CO., LTD.

9F, North Wing, West Block, PKU-HKUST ShenZhen-HongKong Institution, Gaoxin South 7th Road, Nanshan District, Shenzhen, China
Room1001,10th Floor, Block A, No.32A Huoju Road, High-tech Industrial Zone, Dalian City, Liaoning Province, China

Manufacturer: CZUR TECH CO., LTD.

After-sales Address: 2/F, Building 2, Yisou Technology Park, No. 12, Baoshi Road, Jiaoyitang Village, Tangxia Township, Dongguan City
Email:support@czur.com Web:www.czur.com



Via Aretina, 240 - 50136 Firenze
Tel. 055.6800188 - Fax 0556580317
E-mail: gestionidoc@gestionidoc.it
www.gestionidoc.it



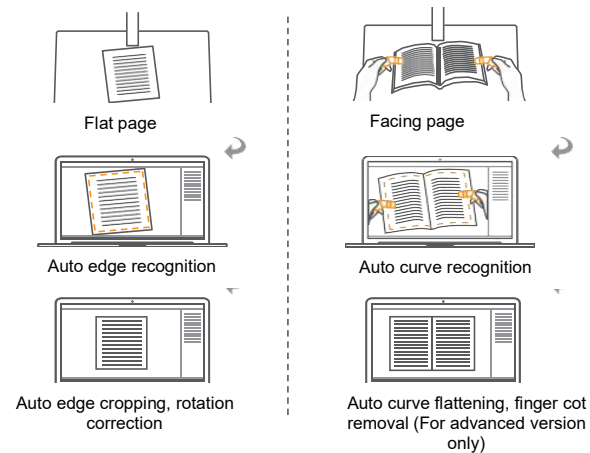
CZUR Shine Getting Started Guide

Required

Note: This device is a brand-new scanner, which is quite different from traditional ones. Be sure to read this Getting Started Guide to get started quickly.

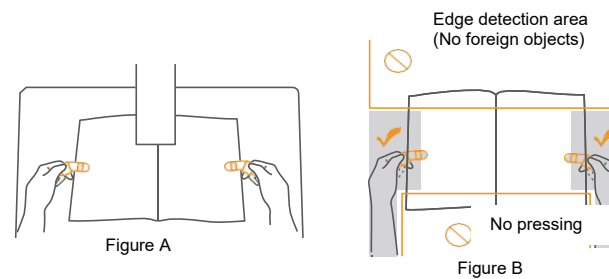
Overview

1. CZUR Shine can scan single-page documents, business cards, vouchers, IC documents, etc. The advanced version of CZUR Shine can also scan binding contracts, books, and archives, etc.
2. Processing methods include [Flat Page], [Facing Page] (for the advanced version only), [Combine Sides], and [Manual Selection].
3. The color options include [Auto], [Color], [B&W], [Grayscale], [Stamps] [Patterns], [Non-Filter].
4. Select the processing mode as you like.



Note:

1. Keep the LED fill light on while scanning to avoid strong ambient light from affecting the scanning effect (such as avoiding strong sunlight from a window).
2. Place the black soft pad properly: The black soft pad must cover the entire preview screen, that is, the preview screen shows no area outside the soft pad.
3. Place a paper at the center of the pad for the best scan result (as shown in Figure A).
4. [Facing Page] It is only for the advanced version of CZUR Shine. You must wear special finger cots to press the book for later automatic finger clearing. Please press the book to be scanned properly (as shown in Figure B).



Scan

1. Download and install "CZUR Shine" with a PC (Download link www.czur.com/support. Windows users can install the software with the accompanying CD for the device).
2. Connect the device to a PC via a USB cable
3. Run "CZUR Shine" to start scanning.
4. Adjust the scanning format of A3 and A4 through the telescopic bar, and then click the icon for auto focus. (For advanced version only)
5. Scanning results are saved locally on the PC, and the save path can be customized.

